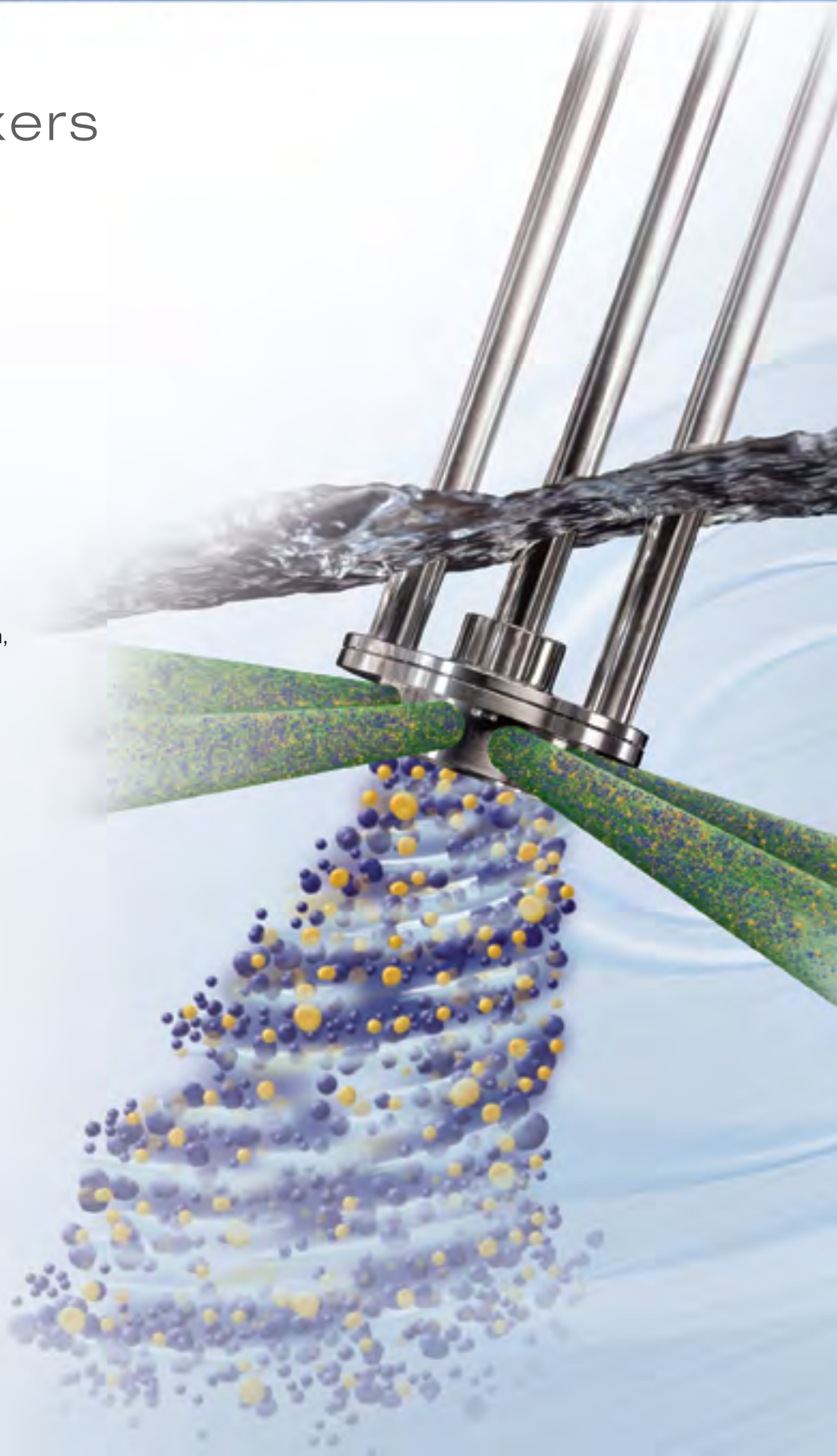


Batch mixers

Silverson offers a complete range of multipurpose batch mixers. The machines are able to perform the widest variety of applications - mixing, emulsifying, homogenising, disintegrating, dissolving - with an efficiency and flexibility unmatched by other machines. Capacities from 5 to 30,000 litres.

The Silverson range of High Shear Batch mixers are of robust and simple construction, which ensures that cleaning and maintenance is kept to an absolute minimum. The range can be divided into two distinct categories – medium range and large range models.



Medium range – Models BX to GX20

Each machine employs the special “interchangeable” Silverson rotor/stator mixing head, which allows it to be used on a wide variety of different products.

Any machine in this range from the 0.75kW BX to the 15kW GX20 can be used on a mobile hydraulic floor stand (local safety regulations permitting). This option greatly increases the flexibility of these mixers, allowing them to be moved from vessel to vessel and to be raised and lowered during operation, if required, in order to give the optimum mixing position at varying stages of the process.



Large range – Models 700X to MX



Silverson is the world leader in the specialised design and manufacture of large scale rotor/stator mixers with a capacity of up to 30,000 litres. All these machines are individually built to order and constructed specifically to suit each customer's requirements.

The large scale mixers possess all the qualities and flexibility of Silverson's medium range models and include a number of additional and unique features.

Each mixer is designed and built to the highest possible engineering standards. From the specially balanced motors to the fitting of precision ground shafts, which are finish turned in-house to ensure critical vibration free running, no aspect of manufacture escapes our rigorous inspection.

These machines are designed to be maintained and serviced in-situ wherever possible. Quick release shaft couplings, split two-part downthrust propeller and hard-surfaced sacrificial shaft journal sleeves are just a few of the features designed to keep maintenance and downtime to a minimum.

In every case Silverson's technical staff will ensure that the customer's needs are precisely catered for.

Technical specifications

Materials of construction

All wetted parts in 316L stainless steel. Special materials on request.

Bush material

The bush will normally be bronze alloy or reinforced PTFE depending on the application.

Motors

TEFV (Totally Enclosed Fan Ventilated) and ATEX approved Flameproof motors are available as standard. Inverter rated, stainless steel and other motors are available as optional extras.

Mounting

Models BX up to GX can be mounted on mobile hydraulic floor stands. Alternatively they can be supplied with either a rectangular or circular flange for mounting on the vessel.

Tri-clamp mounting is also available. Larger machines (Model 700X and above) require vessel mounting.

Sealing

All Silverson Batch mixers are designed for operation in open vessels. Single and double mechanical shaft sealing for operation under vacuum and/or positive pressure is available for most machines.

Cleaning

The machines are in most cases self-cleaning, a short run between successive operations in water, detergent or an appropriate solvent being all that is necessary. For more thorough cleaning, dismantling is easy and downtime minimal.



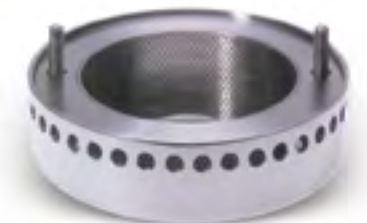
General purpose disintegrating head



Slotted disintegrating head



Square hole high shear screen™



Standard emulsor head and emulsor screen